



SWINDON
BOROUGH COUNCIL

Weekly Attendance Update w/e 22nd March 2024

NEWS

Change of Days for Early Intervention Locality Panels

Thank you for your feedback in regard to changing the dates for the locality panels. The locality teams have listened to all partners feedback and are pleased to advise that as of week commencing 18 March 2024 Early Intervention Locality Panels will take place weekly on:

South: Tuesday 9.30 – 12.30

West: Wednesday 9.30 – 12.30

North: Thursday 9.30 – 12.30



Whilst these will be based in the main on the postcode in which the child lives, the locality panels will consider the school that the child attends when allocating to panels to maximise partnership engagement. The locality teams will continue to review this with all partners and in April 2024, will again ask for your feedback. Thank you for all your feedback to date.

Childhood Vaccinations



Childhood infections like measles and whooping cough are rising, with outbreaks across the country. Such infections can have a huge impact on a child's life. They can miss out on learning time because they are unwell, be hospitalised, and even experience life-long complications and disability. If a child is not vaccinated, they're not protected.

We would encourage parents to take up the offer of the NHS' free childhood immunisation programme as soon as it is offered

it to ensure your child has the best protection. However, if a child has missed a vaccine, it is never too late to check if you can catch up. They can check their child's Red Book to see if they have missed any vaccines or check with their GP if they are unsure. The School aged immunisation service (SAIS) is available for all children of school age, irrespective of their education setting. Your child's GP surgery or the Local Authority Public Health teams will be able to provide contact details of your local SAIS.

Planning for Transitions

As the Easter Holidays are rapidly approaching it will not be long before some of the children we work with will be preparing to change settings. There are a number of resources identified by the Children's Commissioner available to support this area of activity not only for work in schools but to share with families:

BBC Bitesize

The BBC has put together a number of short videos and games to get you excited about starting school as well as offer support with some of the main questions you may have – some of these are answered by students themselves!

Click below for:

[resources for starting primary school](#)

[resources for starting secondary school](#)



Moving from primary to secondary school – Activity pack



Together with children on the Children's Advisory Board, the Children's Commissioner have created an activity pack to support children moving from primary to secondary school. It has questions to help children think about things they might want to find out about their new school, things they like doing and want to continue doing, who they can go to for support and their goals for the future. We also share some top tips from other children who've already moved from primary to secondary school.

[Moving from primary to secondary school – Activity pack](#)

Looking after your mental health and wellbeing



Some children told the Children's Commissioner that they struggle to attend school due to feelings of anxiety, or other mental health worries. Find guides for on how to talk about mental health and how to find support from charity Mind:

Mind – How to get help and support for young people

YOUNG Mi MINDS
fighting for young people's mental health

The charity Young Minds provides lots of guides and advice for understanding, supporting and managing mental health as well as real stories from young people who have struggled with their mental health:

Young Minds – We are here for you



The Children's Commissioner heard from half a million children and young people across England and a lot of them said that they were worried about their mental health. This short flyer for primary school pupils can help you to talk about their feelings and shares where to find more support:

Let's talk about your feelings – primary



The Children's Commissioner heard from half a million children and young people across England and a lot of them said that they were worried about their mental health. This short flyer for secondary school students can help you to talk about their feelings and shares where to find more support:

Let's talk about your feelings – secondary



On My Mind aims to empower young people to make informed choices about their mental health and wellbeing. Their pages have been co-produced by young people to help other young people.

On My Mind website



Kidscape is here to help if children and young people are dealing with bullying and have created top tips to support

Top Tips for dealing with bullying

Help at Hand

If children and young people are in care, leaving care, living away from home or working with children's services, Help at Hand can offer them free support, advice and information. Find out more and contact the service:

Children's Commissioner – Help at Hand

REMINDERS:

Synergy Logins for new users of Synergy

Arrangements have now been finalised for new users to access Synergy

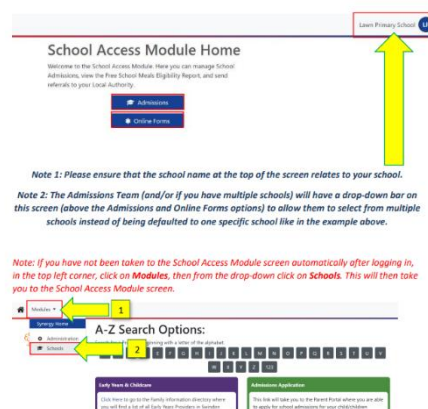
To access the Attendance and Inclusion online Synergy forms for schools, new users need to read the School Access Module training guide and complete the Portal Application form available the Swindon Hub for Education at

<https://hubforeducation.swindon.gov.uk/Page/36027>

Forms needs to be sent to **attendance@swindon.gov.uk**

Once this form has been received, a login will be processed and sent directly to the relevant email address within 72 hours.

If you already have a Synergy login but need access to the School Access Module, please read the training guide and sign the Portal Application Form. Your login will then be amended to allow you access to the Attendance and Inclusion SAM forms. This will take up to 72 hours.



School Attendance Support Team CPD Courses for Schools Academic Year 2023-24

Please be advised the following courses have been developed to support attendance related practice in Swindon. Some of the courses are chargeable and other are free. All courses will be delivered via Teams and the booking arrangements are now on the Swindon Hub for Education. Please note a change of date to the first course for Children Missing Education.

Children Missing Education - Free

Child Missing Education - Why does it matter?

14th June 10.00am-12.30pm

Course code: EWS-0624-T001

Share: <https://hubforeducation.swindon.gov.uk/T224845>

Parental Responsibility Measures – Penalty Notice Training for Schools – Free

Penalty Notice Training for Schools - When is a Penalty Notice Appropriate?

23rd May 10.00am-12.00pm

Course code: EWS-0524-T001

Share: <https://hubforeducation.swindon.gov.uk/T224849>

Parental Responsibility Measures – Irregular Attendance Prosecution – Free

An invaluable course designed for schools who prepare their own witness statements for school attendance prosecutions.

8th May 2024 12.30pm-3pm

Course code: EWS-0524-T002

Share: <https://hubforeducation.swindon.gov.uk/T224853>

New Attendance Officers Introduction to Attendance £50 for 2 sessions

An introduction to attendance - For new attendance officers and school-based attendance leads and senior leaders with oversight of attendance.

Day 1: 19th April 10am-12pm

Day 2: 26th April 10am-12pm

Course code: EWS-0424-T002

Share: <https://hubforeducation.swindon.gov.uk/T225151>

Improving School Attendance -Support for Senior Leaders in Schools and Settings. Chargeable £75

This course provides guidance and practical strategies to school senior leaders with an attendance remit to support improvements especially for vulnerable groups.

21st June 10am-12.30pm

Course code: EWS-0624-T002

Share: <https://hubforeducation.swindon.gov.uk/T225123>

Exclusions and Suspensions

Risk of Permanent Exclusion - Weekly Drop-in Every Tuesday 10.00 – 11.00am



To support colleagues in schools who are concerned about a pupil is at risk of permanent exclusion or repeated suspensions, a weekly drop in has been set up to discuss the situation and provide advice and guidance. There is no need to book into the drop in please join the Teams link below and you will be admitted from the waiting room. There may be a wait depending on how many join but initial details can be gathered and then we will call you back to discuss in more detail as required.

[Click here to join the meeting](#)

Menu of Intervention – Word Version now available

To help to support the needs of the children and young people we work with it is import to be aware of the relevant services and resources that are available. We have therefore produced a Menu of Interventions guidance to provide details of the relevant support available, some of which are free of charge

The guidance is split into services covering:

- Mentoring
- Tutoring and Learning
- Therapeutic
- SEND
- Other



However, please note none of the organisations listed (external to SBC) are fully endorsed by Swindon Borough Council. Therefore, if you chose to engage with any organisation, you will need to carry out your own due processes, including safeguarding and costing arrangements.

For this resource to be helpful to colleagues it is important we keep it up to date and as comprehensive as possible, therefore if you have any suggested amendments and/or additions please email: Attendance@swindon.gov.uk

The Menu of Intervention is available from the Swindon Hub for Education under the section for Alternative Provision at:

[Alternative Provision Directory | Swindon hub for Education](#)

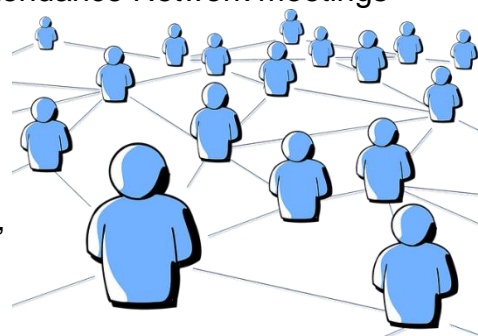
Menu of interventions link for a printable version

<https://secure2.sla-online.co.uk/v3/Resources/Page/21719>

Reminder School Attendance Network Meetings

Once again, we will be providing our programme of Attendance Network meetings for the year ahead. This is an opportunity of colleagues to meet face to face to explore attendance related issues and develop a community of practice.

All of the meetings will be taking place between 1.30pm-3.30pm at New College 'Queens Drive Campus' New College Dr, Swindon SN3 1AH



We would encourage a representative from each school/setting to attend. Booking is via the Swindon Hub for Education. Please note you will need to have a client login to book on (please speak to your school business manager). For further support please contact hubforeducation@swindon.gov.uk

Attendance Briefing April 25th 2024

Course code: EWS-0424-T001

Share: <https://hubforeducation.swindon.gov.uk/T216272>

Reminder Weekly Attendance Officer Drop-in Sessions – Every Wednesday



- To support the work of Attendance Officers and other colleagues concerned about an attendance issue we have arranged a weekly online drop-in session every Wednesday 11am-12 noon
- We would encourage colleagues to join the meeting if they have specific questions relating to attendance including individual cases or would like to share practice.
- There is no need to book, you can join the meeting at any time during the hour-long session
- If you would like to discuss a case for further advice and guidance please ensure this is discussed anonymously
- These meetings are held term time only

To join the meeting please follow this link. This is the same link for each meeting:

<https://msteams.link/WDMM>

Reminder Attendance and Inclusion Mailing List

To help ensure that colleagues in schools receive all the necessary information regarding attendance related activity in Swindon, the Attendance and Inclusion Team is compiling an 'Attendance Mailing List'. We encourage Attendance Leads, Attendance Officers and other key staff to join the list. For those who wish to join, please can you send the following details to attendance@swindon.gov.uk



- Name
- Role
- School/Setting
- Contact email

Please put MAILING LIST in the subject of the email.

DATA

Swindon and National Data

This is the local and national picture of data from the DfE Wonde data source regarding attendance and absence figures

Swindon

Overall

Current academic year up to Friday 15 March 2024



Number of pupils 31,473	Overall attendance % 92.8%	Overall absence % 7.2%	Unauthorised absence % 2.3%
Persistently absent Number of persistently absent pupils 5,934 Percentage of persistently absent pupils 18.9%		Severely absent Number of severely absent pupils 824 Percentage of severely absent pupils 2.6%	

Last 5 days (14 March 2024 to 20 March 2024)



Overall attendance % 92.3%	Overall absence % 7.7%	Unauthorised absence % 2.3%
-------------------------------	---------------------------	--------------------------------

Secondary

Current academic year up to Friday 15 March 2024



Number of pupils 13,191	Overall attendance % 90.7%	Overall absence % 9.3%	Unauthorised absence % 3.4%
Persistently absent Number of persistently absent pupils 3,142 Percentage of persistently absent pupils 23.8%		Severely absent Number of severely absent pupils 576 Percentage of severely absent pupils 4.4%	

Last 5 days (14 March 2024 to 20 March 2024)



Overall attendance % 89.8%	Overall absence % 10.2%	Unauthorised absence % 3.7%
-------------------------------	----------------------------	--------------------------------

Primary

Current academic year up to Friday 15 March 2024



Number of pupils 17,278	Overall attendance % 94.9%	Overall absence % 5.1%	Unauthorised absence % 1.2%
Persistently absent Number of persistently absent pupils 2,315 Percentage of persistently absent pupils 13.4%		Severely absent Number of severely absent pupils 109 Percentage of severely absent pupils 0.6%	

Last 5 days (14 March 2024 to 20 March 2024)



Overall attendance % 94.8%	Overall absence % 5.2%	Unauthorised absence % 1.0%
-------------------------------	---------------------------	--------------------------------

Special

Current academic year up to Friday 15 March 2024



Number of pupils 794	Overall attendance % 86.7%	Overall absence % 13.3%	Unauthorised absence % 3.8%
Persistently absent Number of persistently absent pupils 298 Percentage of persistently absent pupils 37.5%		Severely absent Number of severely absent pupils 56 Percentage of severely absent pupils 7.1%	

Last 5 days (14 March 2024 to 20 March 2024)



Overall attendance % 87.0%	Overall absence % 13.0%	Unauthorised absence % 4.0%
-------------------------------	----------------------------	--------------------------------

National

Overall absence rate 6.8% during week commencing 19 February 2024	Authorised absence rate 4.3% during week commencing 19 February 2024	Unauthorised absence rate 2.6% during week commencing 19 February 2024
Overall absence rate 7.0% academic year 2023/24 to date	Authorised absence rate 4.7% academic year 2023/24 to date	Unauthorised absence rate 2.2% academic year 2023/24 to date
Persistent absence rate 20.7% academic year 2023/24 to date		

Contact

If you require for further information in relation to this Attendance Update please contact Lesley O'Hagan on LOHagan@swindon.gov.uk