

Welcome to



Badbury Park Primary

Telephone: 01793 332425  
Email: [admin@bluekitetrust.org.uk](mailto:admin@bluekitetrust.org.uk)  
Website: [www.bluekitetrust.org.uk](http://www.bluekitetrust.org.uk)  
Twitter: @BadburyPark  
Facebook: @BadburyPark

Head of School: Mrs Louise Dance  
c/o Ferndale Primary and Nursery School  
Wiltshire Avenue  
Swindon  
Wiltshire  
SN2 1NX

  
The Blue Kite  
Academy Trust

Telephone: 01793 332425  
Email: admin@bluekitetrust.org.uk  
Website: www.bluekitetrust.org.uk  
Twitter: @BadburyPark  
Facebook: @BadburyPark



Head of School: Mrs Louise Dance  
c/o Ferndale Primary and Nursery School  
Wiltshire Avenue  
Swindon  
Wiltshire  
SN2 1NX

# Welcome to our new school!

## Vision

Our school will be a vibrant, friendly place where the children are at the heart of what we do. We believe in teaching skills, sharing knowledge and building special memories that children will take with them through the rest of their lives. We believe that through inspirational teaching, determination, love and laughter, the children in our school can achieve their greatest potential. We aspire to do this through a creative curriculum, with outdoor learning and play at it's core, promoting confidence, collaboration and engaging curiosity.

We believe in teaching and modelling values and preparing children for life in the 21st Century, giving them a solid foundation for their future.



## Curriculum Principles

Our curriculum will be creative and inspiring, designed to promote cooperation, collaboration, reasoning and resilience, and will be enhanced by outdoor learning. We also recognise the importance of the need for high quality sustainable play for all primary aged children. Like all schools within The Blue Kite Academy Trust, Badbury Park Primary School will have a dynamic approach to teaching and learning; we will set creative questions for pupils to explore, we will engage their curiosity and nurture their imaginations, allowing the children to become more fully involved and excited about learning.

## Aims

- That all pupils are provided with outstanding learning experiences that will ensure engagement, leading to comprehension, leading to mastery of key subjects.
- All children will be taught by professionals who are skilled, adept and enthusiastic about teaching and learning, and are committed to transmitting that enthusiasm to another generation.
- That a shared high expectation of behaviour and of adherence to our shared values, are the cornerstone of a successful learning environment.
- That our teaching of the curriculum will impart skills through inspiring lessons, that become lifelong memories.

## We will:

- Have an emphasis on outdoor learning, challenge, reasoning and dialogue.
- Respond to children's diverse learning needs and make certain that work is provided to ensure they succeed.
- Overcome potential barriers to learning for individuals and groups of children.
- Provide enriched curricular opportunities outside the National Curriculum, to meet the needs of individuals, groups of children and the local community.
- Encourage learning through play; *"play is the highest form of research."* (Albert Einstein)
- Develop our Forest School.

# Head of School's Welcome



I feel extremely excited and honoured to be the first Head of School, at Badbury Park Primary School.

Badbury Park will open in September 2019, with its founding staff and pupils. We aim to build an inspiring, bespoke environment and curriculum, with the children's and community's passions and fascinations at the heart of all we do.

The educational journey of a Badbury Park child will begin in our vibrant and creative Early Years setting, where child led play, outdoor learning and forest school principles are central. This is where the seeds of lifelong learning will be planted. The children will move through Key Stage One and Key Stage Two, where they will grow and thrive into forward thinking and compassionate individuals, who are ready for the future.

At Badbury Park, we aim to develop the whole child; building children's resilience and values in a supportive and nurturing environment, where aspirations are high. Badbury Park will be a school at the heart of the community where there is a shared set of values and a collective responsibility, to prepare our children for all the excitement and challenges the future may bring.

Amidst a busy day of problem solving, laughter and learning, there will be planned time for reflection and mindfulness. We are blessed with beautiful green spaces, a copse and stream, a studio, a multi-sports area and cookery room, to ensure Badbury Park children experience a varied and inclusive curriculum.

As this school grows, we aim to employ the best educational practitioners who are passionate, flexible and creative with their teaching, and who wholeheartedly want the best for our children.

We look forward to welcoming you to be involved in this exciting journey.

Mrs Louise Dance

Head of School

# Our New School; Badbury Park Primary School



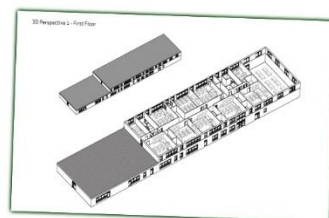
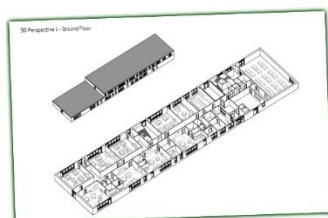
## Environment

The new school building will be built in the academic year 2019-2020. The Blue Kite Academy Trust and the Executive Headteacher will liaise with the architects and building contractors, to ensure a safe, attractive environment. The building will be two storeys with 16 classrooms, with Key Stage Two upstairs. The playground space will be zoned for the children to play cooperatively, with areas for imaginative, creative and energetic play.

Within the school building, the space will be light, uncluttered and bright. The main office will be welcoming to parents and children. The classroom layouts will be flexible and suitable to the children's learning, with Early Years and Key Stage One children having their own outdoor areas directly attached to their classroom. Group rooms have been planned and designed to be attached to each year group, for withdrawal and intervention sessions. There will be a DT/cookery room which will comfortably seat 15 children, and a library which will also be used for nurture groups. A double height main hall, with a large kitchen area and PE store, will allow for whole school assemblies, PE lessons and lunch to be served. The hall will also be rented out for local community use.

Utilising our school site and surrounding areas will be important in developing our school curriculum, particularly with the link to outdoor learning. We will be extremely lucky to have such beautiful, natural environmental features within walking distance, such as the stream, copse and woodland area. Adjacent to Badbury Park Primary School, we have Coate Water Country Park, The Richard Jefferies Museum and a local farm.

Whilst our amazing new school is being built, our first year will be based in a temporary building very near to the site of the main school. The temporary building will be purpose built to accommodate an intake of Reception pupils, and will have a cloakroom, toilet, classroom, staffroom, meeting room and outdoor play area. The temporary school site will promote the Trust's vision to be a vibrant and friendly space, to welcome in our first cohort of children.





# Our Forest School

## Our Forest School

Forest School is an inspirational process that offers all learners regular opportunities to achieve and develop confidence and self-esteem, through hands on learning experiences in a natural environment.

Forest School is a specialised learning approach that sits within and complements the wider context of outdoor education.

Children can run, make a noise, get their hands dirty and learn in a natural space by taking part in seasonal activities that may involve an element of managed risk, for example, making camp fires; by succeeding here, they develop the self-esteem that will support them throughout their lives. At Badbury Park, we will provide a nurturing space that supports our children's well-being by providing and implementing positive outdoor, child-led experiences in a natural setting. The impact of which will help foster traits such as resilience, confidence and independence, and develop motivation, co-operation, decision-making and social skills. *"Natural environments stimulate social interactions between children."* (Bixler et al. 2002)

Our own Forest School will be created using a stretch of woodland at the back of the school's grounds, to enrich this culture. We will also utilise the school field for sports and PE lessons, and dedicate an area for growing vegetables for cooking.

## Benefits of a Forest School Approach:

- Improved confidence, social skills, communication, motivation and concentration.
- Improved physical stamina, fine and gross motor skills.
- Increased knowledge of environment, increased frequency of visiting nature within families.
- Healthy and safe risk-taking.
- Improved creativity and resilience.
- Improved academic achievement and self-regulation.
- Increased patience, self-discipline and capacity for attention.
- Improved higher level cognitive skills.

# Our Uniform

The Blue Kite Academy Trust have chosen to use an anemone leaf to become the school logo for Badbury Park, after being inspired by the work of Richard Jefferies. Richard Jefferies was born in Swindon, was an ecologist and took inspiration from his surroundings, which fed into the texts that he wrote.

Our vision is for the children to become connected with their outdoor environment and learn about the history linked to the Badbury Park area.

## Our School Uniform:

Girls are required to wear:

- A black skirt, pinafore dress, shorts or trousers
- A white polo shirt (with or without the school logo)
- A grey jumper or cardigan with the school logo
- Flat black shoes

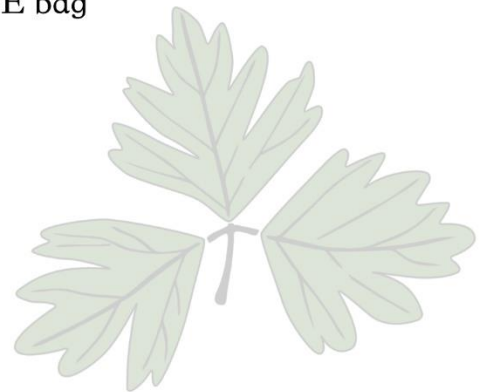
Boys are required to wear:

- Black trousers or shorts
- A white polo shirt (with or without the school logo)
- A grey jumper or cardigan with the school logo
- Flat black shoes



## Optional Items to Purchase:

- A green book bag with shoulder strap
- A green fleece
- A green sun hat (legionnaires or cap style)
- A green woolly hat
- A green PE bag



## PE Kit:

- Black shorts
- A plain green t-shirt
- Daps or trainers

Our school uniform can be ordered directly from our supplier at [www.dressmyschool.co.uk](http://www.dressmyschool.co.uk)

## Joining Reception

Our excellent induction process will be inclusive and welcoming to families. It will include coffee meetings, stay and play sessions, visits to nursery settings and home visits where we will meet the children in their home environment.

## Parental Engagement

Badbury Park will work closely with parents, as it is vital you are involved in your children's education, as partners and advocates. Parents will be invited into school to volunteer in classrooms and help with special events. We will hold specific curriculum events to share ways of learning, and our open door policy will ensure that parents can get help and support, in times of need. We will open our school for community use and will invite community members to school events, such as our Christmas Fayre and school productions.

## Behaviour

Badbury Park will expect every member of the school community to behave in a caring and considerate way towards others. We will reward good behaviour, and believe that this will develop an ethos of kindness and co-operation. The school will promote good behaviour, rather than merely deter anti-social behaviour. We treat all children fairly and apply our behaviour policy in a positive and consistent way, recognising children who are doing the right things and giving them praise. We have a very clear policy on positive behaviour management and the children will be involved each year, in establishing the school rules; understanding what is safe and good behaviour.

## Transfer to Secondary School

As soon as a child starts in Year 6, information will be given to parents about the choices they can make for secondary school. Within the school curriculum, children will be prepared for their transition to secondary school and will feel ready and confident to move on.

*We look forward to welcoming you to Badbury Park Primary School and working with you to give your child the best possible education.*



